

LUXURY
LIVING



KARINA RESIDENCE

MID
Minia International

IN ASSOCIATION WITH
IPC INTERNATIONAL

 **IPC**

LUXURY
LIVING



KARINA RESIDENCE

MINIA INTERNATIONAL DEVELOPERS in association with IPC International are proud to present its new residential project **"KARINA RESIDENCE"** located in the most sought after area of Faneromeni, Salt Lake, Larnaca City.

KARINA RESIDENCE will comprise of 6 x 2 bedroom luxury apartments on the first 3 floors and 2 x 2 bedroom luxury penthouse apartments on the 4th floor with individual private and luxury roof-gardens with amazing panoramic views of the Salt Lake.

KARINA RESIDENCE is situated just 5 minutes driving distance to the sea, 7 minutes drive to the Airport, just 4 minutes drive to the City Centre and 3 minutes drive to the new General Hospital.

All energy efficient high end specification luxury apartments are designed with elegance to provide luxury living and include en-suite bathrooms and built in wardrobes. For those who prefer the top-end luxury, they can select to purchase a luxury 2 bedroom penthouse apartment on the 4th floor which provides luxury living to its limits with spectacular Lake Views.

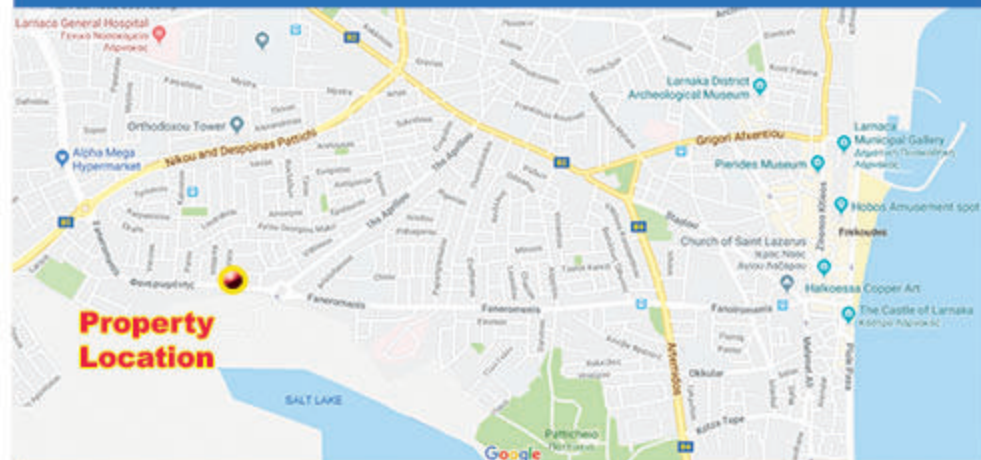
KARINA RESIDENCE has been fully designed and studied by a firm of leading architects, engineers and Interior Designers. The modern design of the exterior and Internal of the building makes excellent use of the features like, high pressured laminated wood, unique glass balconies from the living room and smart design layout of the living areas designed to offer optional space, privacy and also un-obstructed views of the Salt Lake.

The project is expected to be completed by December 2019

Property distance from:

Center of town 4 mins drive Beach 5 mins drive Airport 7 mins drive
Nicosia 35 minutes Ayia Napa 30 minutes Limassol 40 minutes

CYPRUS



LARNACA

PROPERTY DESCRIPTION

LUXURY
LIVING



EXTERIOR DESIGN



LUXURY
LIVING



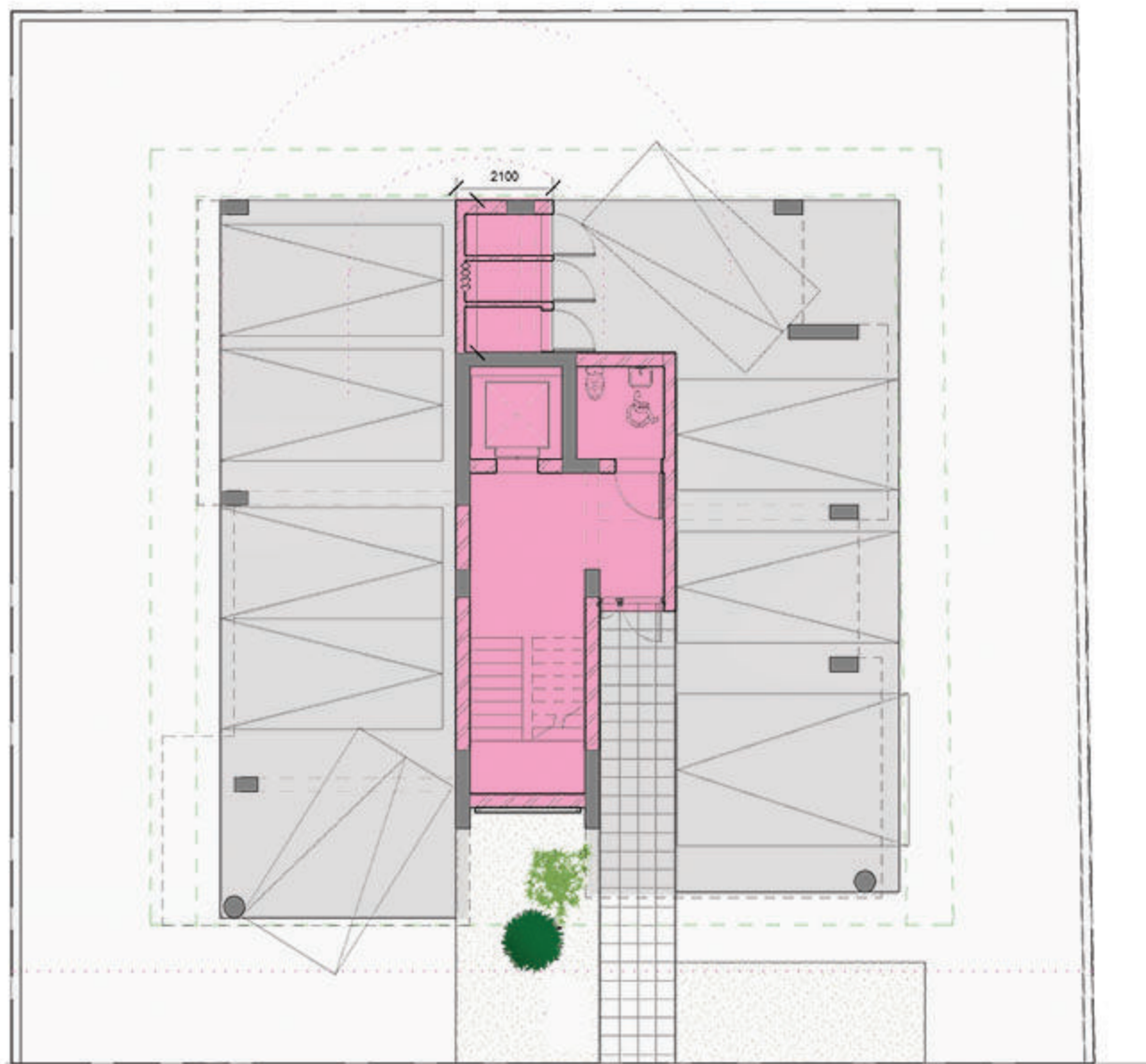


LUXURY
LIVING

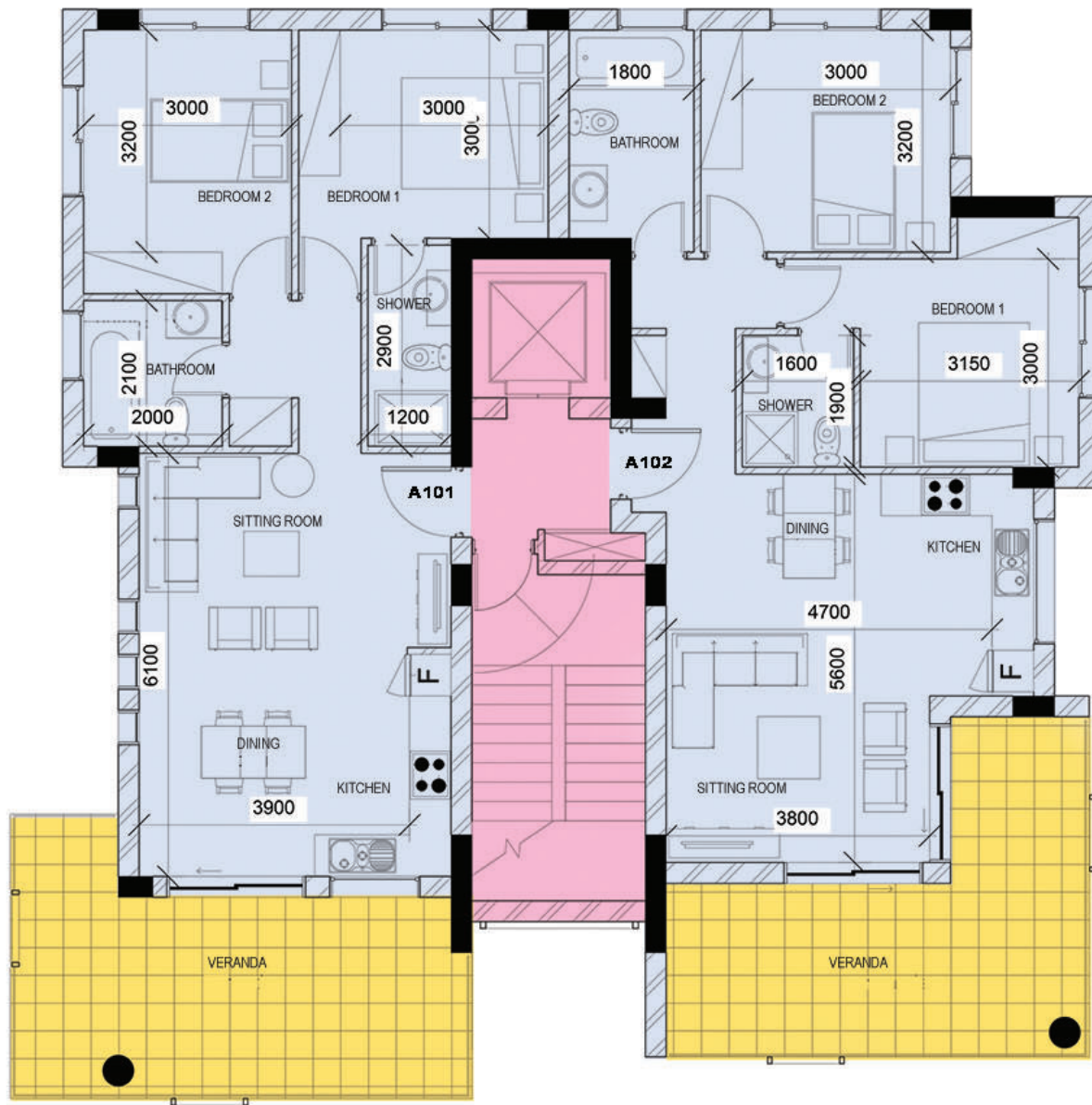


INTERIOR DESIGN



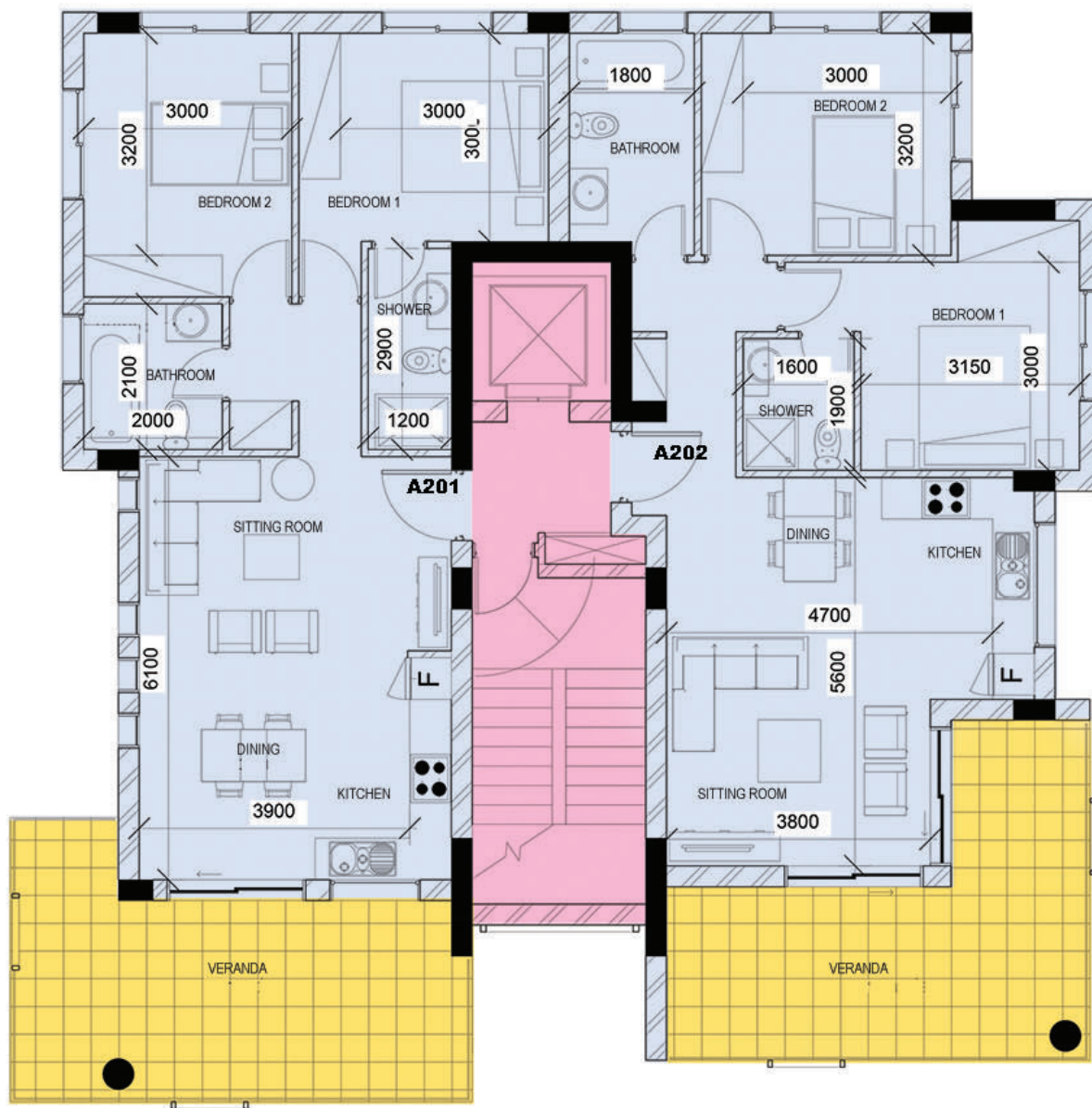


GROUND FLOOR



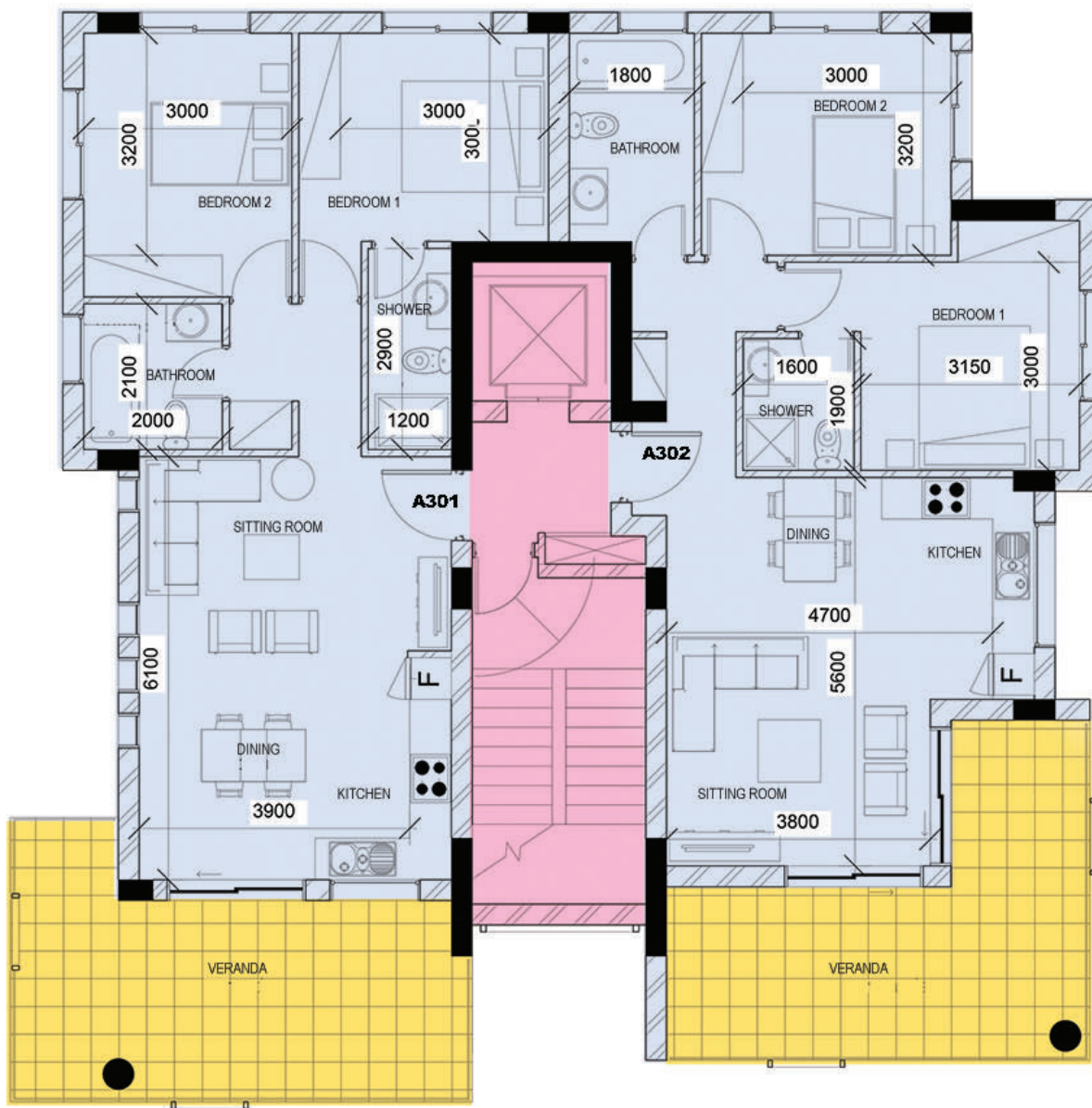
	Apartment	
	A101	A102
No of bedrooms	2	2
Area m ²	75	75
Covered verandas m ²	21	21
Uncovered verandas m ²	-	-
Total m ²	96	96

FIRST FLOOR



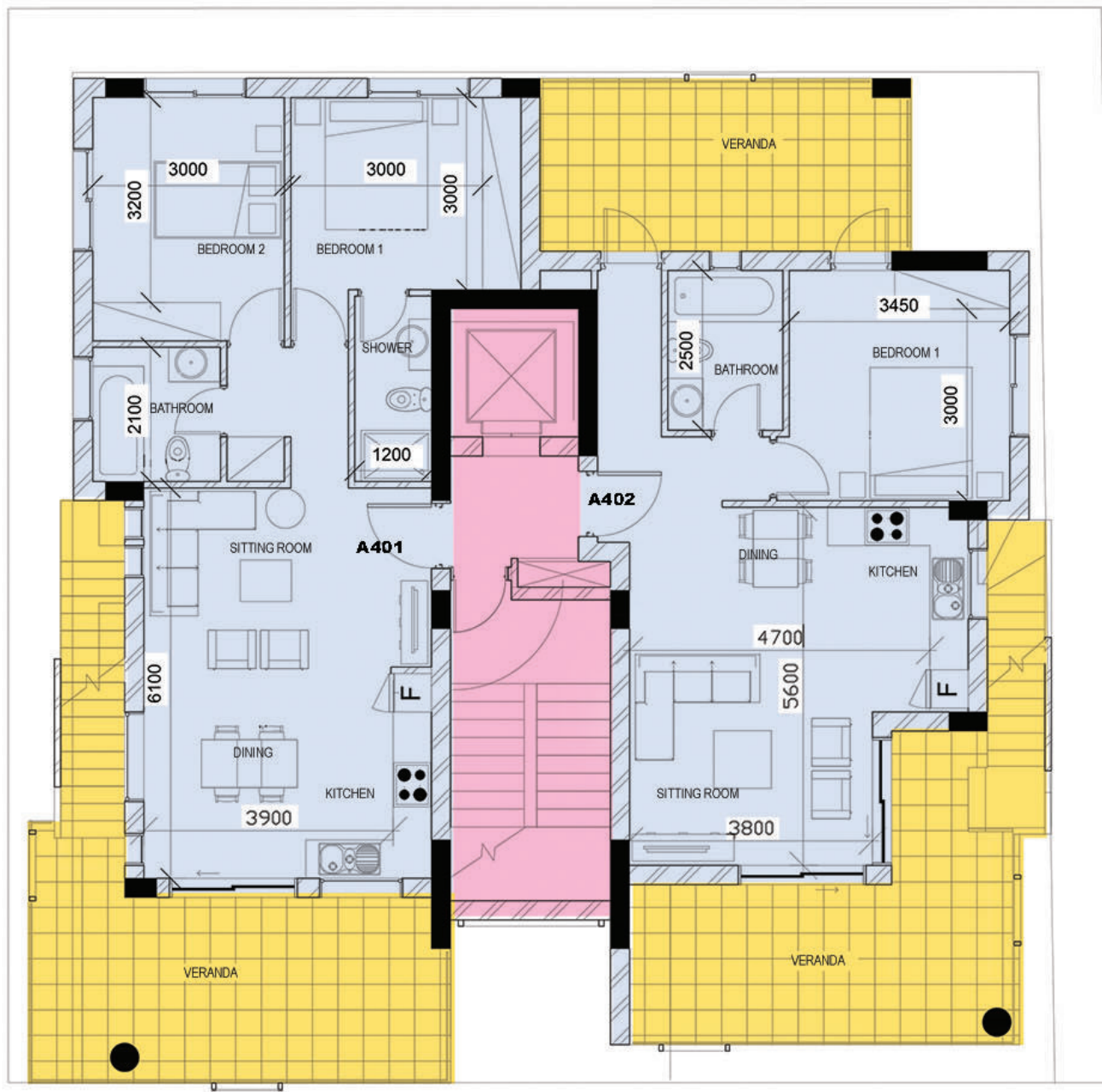
	Apartment	
	A201	A202
No of bedrooms	2	2
Area m ²	75	75
Covered verandas m ²	21	21
Uncovered verandas m ²	-	-
Total m ²	96	96

SECOND FLOOR



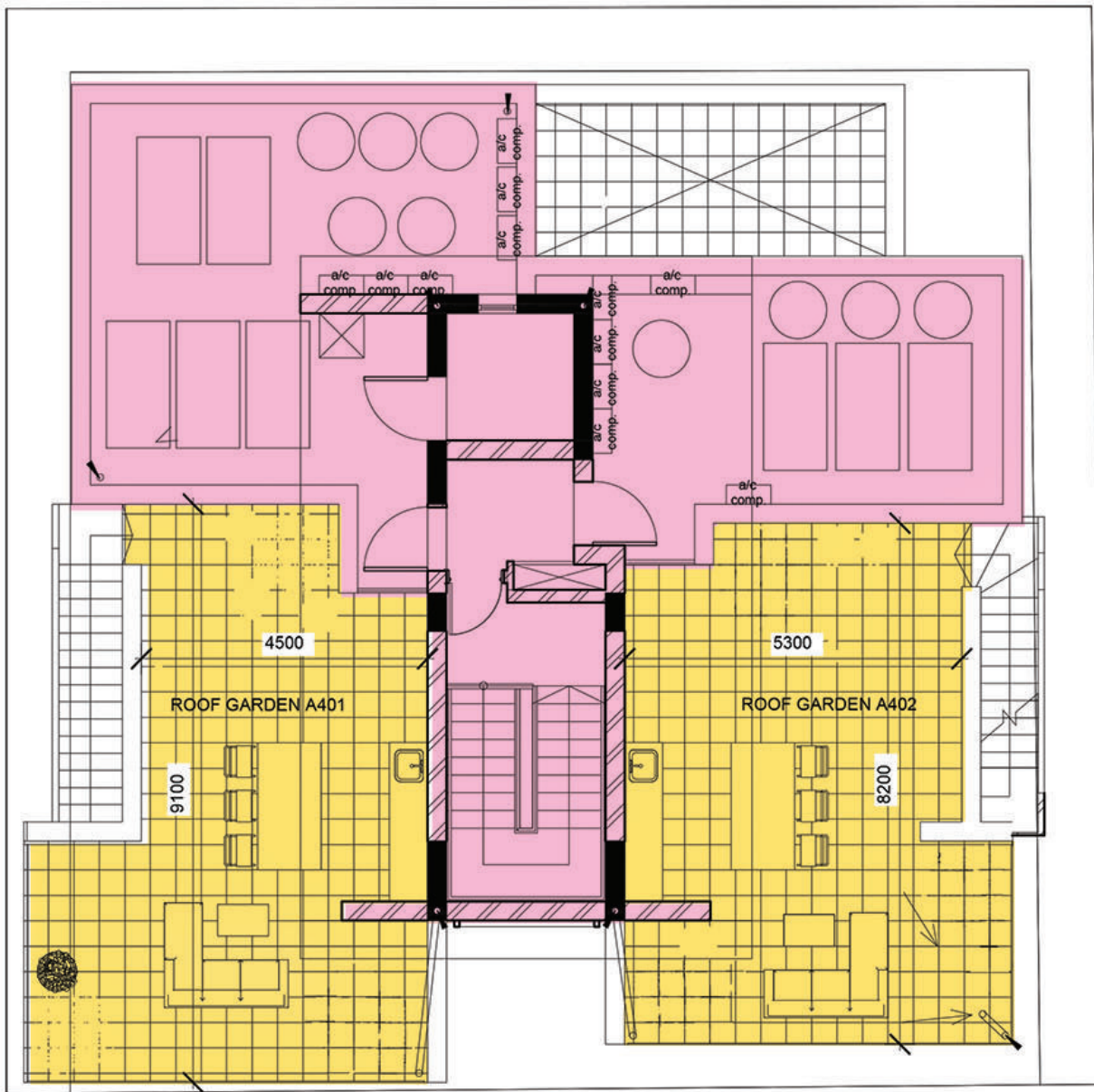
	Apartment	
	A301	A302
No of bedrooms	2	2
Area m ²	75	75
Covered verandas m ²	21	21
Uncovered verandas m ²	-	-
Total m ²	96	96

THIRD FLOOR



	Apartment	
	A401	A402
No of bedrooms	2	1
Area m²	75	59
Covered verandas m²	20	18
Uncovered verandas m²	-	17
Roof Garden m²	31	29
Total m²	126	123

FOURTH FLOOR



ROOF GARDEN



Egypt: 0020 2 2541 2502 (Landline) 0020 10 1832 0003 (Mobile) Lebanon: 00961 3 888 202 (Mobile)

Cyprus: 00357 23020300 (Office) 00357 96453913 & 00357 96555090 (Mobile)

george.parfou@ipc-international.com

IN ASSOCIATION WITH
IPC INTERNATIONAL

